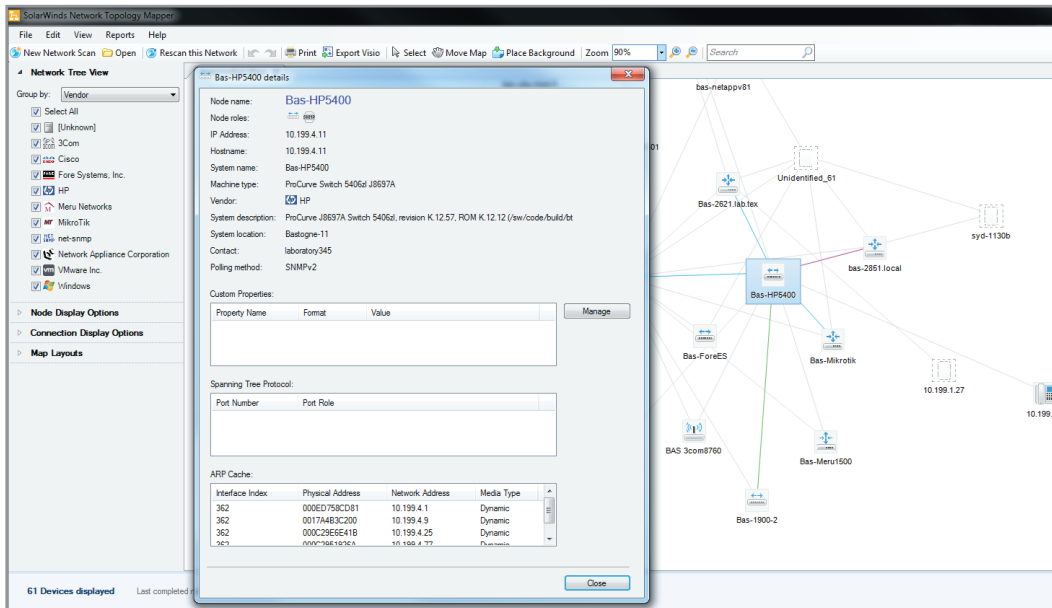


# Network Topology Mapper

MAP YOUR NETWORK AUTOMATICALLY IN JUST MINUTES



Download a free product trial  
and start mapping your network  
in minutes.

 **DOWNLOAD FREE TRIAL**

Finally, you can put down your whiteboard markers and relax while SolarWinds® Network Topology Mapper (NTM) does the network mapping for you. Leveraging a unique multi-layer discovery technique, Network Topology Mapper automatically discovers your LAN or WAN and produces comprehensive, easy-to-view network diagrams that integrate OSI Layer 2 and Layer 3 topology data (including switch-to-switch, switch-to-node, and switch-to-router port connections). With two mouse clicks, this data can be exported into Microsoft Office® Visio® and easily shared with your colleagues.

## Network Topology Mapper at a Glance

- Automatically discovers and diagrams network topology
- Supports multiple discovery methods including SNMP v1 – v3, ICMP, WMI, CDP, VMware, Hyper-V, and more
- Exports network maps to Microsoft Office Visio, PDF, and PNG formats
- Delivers reports on switch ports, VLANs, subnets, and inventory
- Addresses reporting needs for PCI compliance, FIPS 140-2, and other regulatory requirements

## Features

### Auto-Discovery & Detailed Map Creation

Network Topology Mapper automatically discovers your entire network and creates comprehensive, detailed network maps in just minutes. You can also edit node details of map objects and connect network devices manually.

### Export Maps to Common Formats

Network Topology Mapper exports network maps to Microsoft Office Visio, PDF, and PNG formats, and also schedules updated map export to Orion® Network Atlas.

### Network Regulatory Compliance

Network Topology Mapper allows you to directly address PCI compliance and other regulations that require maintenance of an up-to-date network diagram. Network Topology Mapper is also FIPS 140-2 compliant.

### Multi-Level Network Discovery

Network Topology Mapper performs multi-level discovery to produce an integrated OSI Layer 2 and Layer 3 network map that includes detailed device information.

### Auto-Detect Changes to Network Topology

Network Topology Mapper automatically detects new devices and changes to network topology with scheduled network scanning.

### Manage Network Inventory

Network Topology Mapper lets you perform inventory management of hardware assets and automate report creation.

### Generate Inventory and Network Reports

Network Topology Mapper's robust reporting tools help you keep track of inventory and network information.

## System Requirements

HARDWARE	MINIMUM REQUIREMENTS
CPU	2Ghz processor
Memory	1GB RAM
Hard Drive	5GB free disk space is recommended
SOFTWARE	MINIMUM REQUIREMENTS
OS	Windows XP — Windows 8 desktop OS and Windows Server 2003-2012
.Net Framework	3.5 or later

## Try Before You Buy. Download a Free Trial!

At SolarWinds, we believe you should try our network topology mapping software before you buy. That's why we offer free trials that deliver full product functionality. Simply download and install the software. That means no complex service agreements. No professional services. No confusing pricing structures. No set-up charges. Download your free, fully functional trial today!

## About SolarWinds

**SolarWinds** (NYSE: SWI) provides powerful and affordable IT management software to customers worldwide. Focused exclusively on IT Pros, we strive to eliminate the complexity in IT management software that many have been forced to accept from traditional enterprise software vendors. SolarWinds delivers on this commitment with unexpected simplicity through products that are easy to find, buy, use, and maintain, while providing the power to address any IT management problem on any scale. Our solutions are rooted in our deep connection to our user base, which interacts in our online community, **thwack**, to solve problems, share technology and best practices, and directly participate in our product development process. Learn more at <http://www.solarwinds.com>.

## Learn More

For product information or to purchase SolarWinds products, visit [solarwinds.com](http://solarwinds.com), call, or email:

### Americas

Phone: 866.530.8100  
Fax: 512.857.0125  
Email: [sales@solarwinds.com](mailto:sales@solarwinds.com)

### EMEA

Phone: +353 21 5002900  
Fax: +353 212 380 232  
Email: [sales@solarwinds.com](mailto:sales@solarwinds.com)

### APAC

Tel : +65 6593 7600  
Fax : +65 6593 7601  
Email: [sales@solarwinds.com](mailto:sales@solarwinds.com)

3711 South MoPac Expressway | Building Two | Austin, Texas 78746

Download a free product trial  
and start mapping your network  
in minutes.

 **DOWNLOAD FREE TRIAL**

## PROSPERON NETWORKS: YOUR LEADING IT SOLUTIONS PROVIDER

Prosperon Networks are a leading IT Solutions provider specialising in Network and Systems Management monitoring solutions for small/medium and enterprise networks.

Our SolarWinds Certified Professional Engineers have overseen some of the largest installs of SolarWinds Orion in Europe and over time have gathered a wealth of experience and best practice skills that will ensure your deployment of Orion is working at the levels required.



Tel: 0845 833 1185  
Email: [info@prosperon.co.uk](mailto:info@prosperon.co.uk)  
Web: [www.prosperon.co.uk](http://www.prosperon.co.uk)

